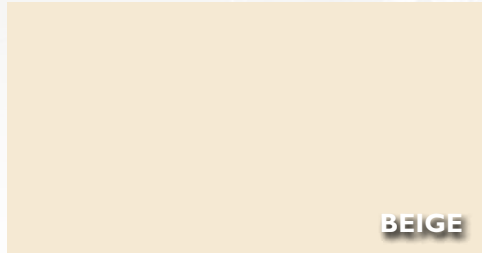
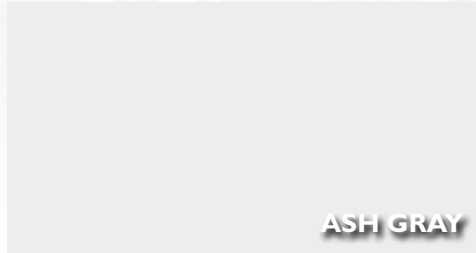


# STONLUX

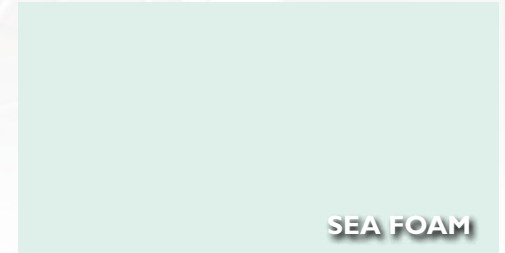
Long-lasting, super clean, lustrous floor protection. An ultra-smooth, chemical and impact-resistant formulation for areas requiring static control and a low friction surface. Stonlux is a leading choice for clean room environments, and offers a sleek and clean look.



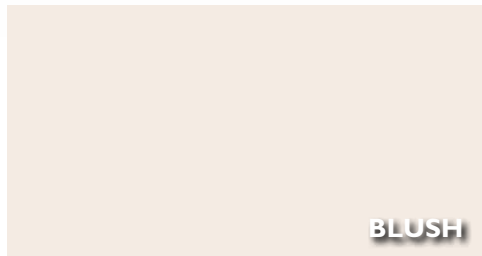
**BEIGE**



**ASH GRAY**



**SEA FOAM**



**BLUSH**



**PLATINUM**



**SKY BLUE**



**BEIGE ESD**



**ASH GRAY ESD**



**SEA FOAM ESD**



**BLUSH ESD**



**PLATINUM ESD**



**SKY BLUE ESD**

Color matching available with additional lead time, minimum order requirements and a slight premium. Color reproductions are as accurate as modern photography and quality printing methods can produce. For actual color please request a sample, [www.stonhard.com](http://www.stonhard.com). © 2018 Stonhard